

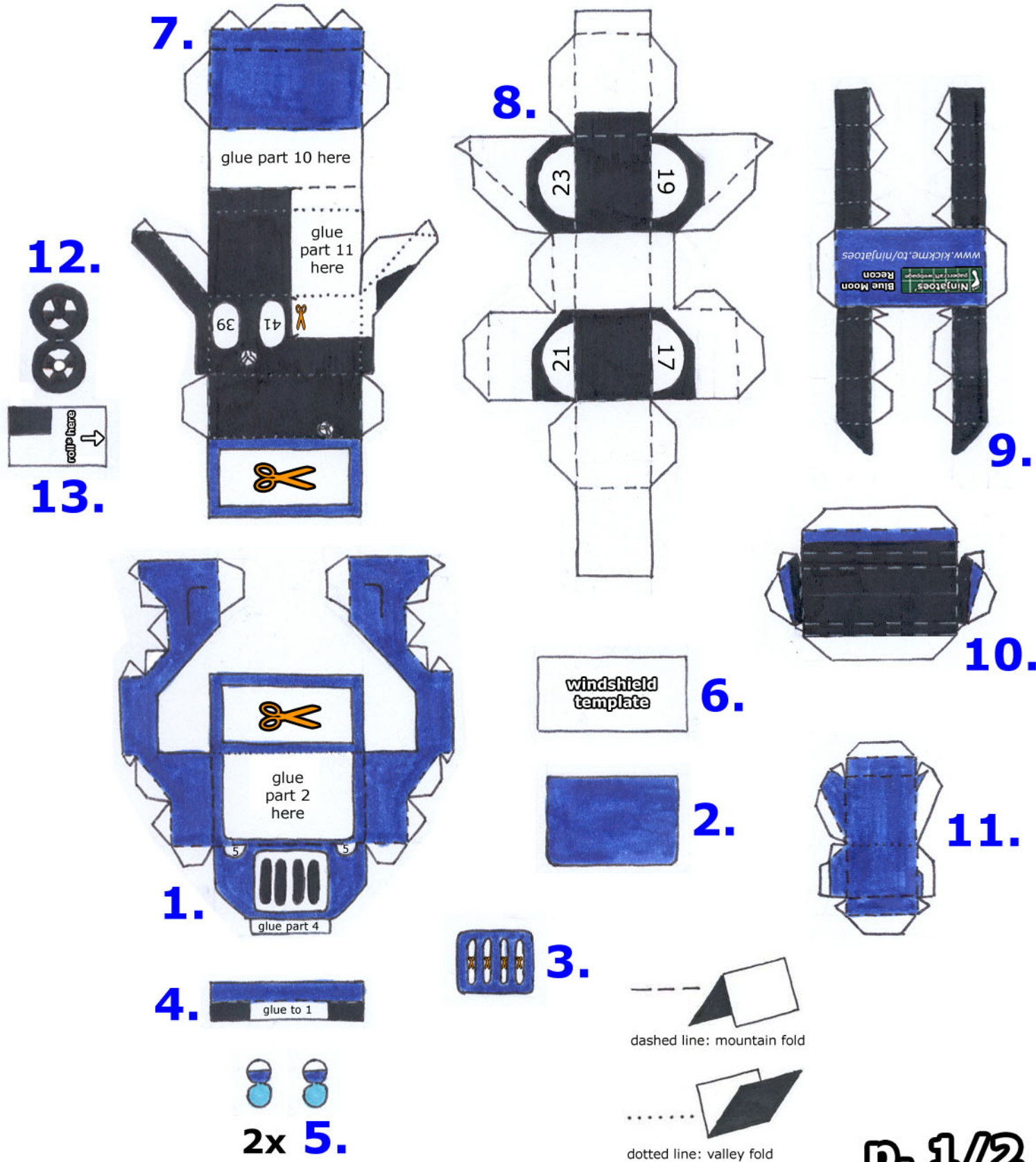


Blue Moon Recon

Armed only with a **Machine Gun**, the usefulness of **Recon** units in the 2001 Game Boy Advance turnbased strategy game Advance Wars depends on how you use them.

In Fog of War missions, they're obviously the best choice to scout the areas ahead. A good tactic is to "hop" from forest to forest to keep them hidden from the enemy, because although they're cheap to build, they're also very valuable...

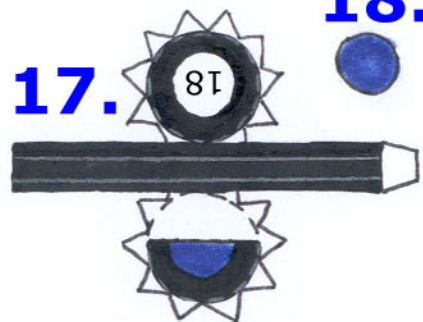
game site: <http://www.advancewars.com/>



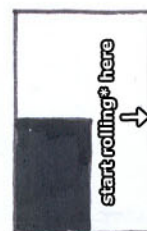
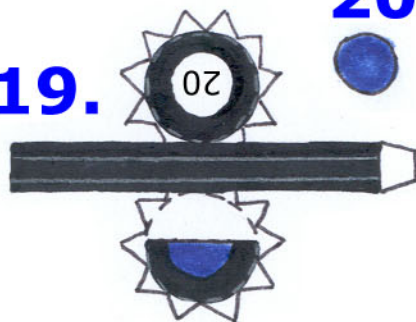
18.

20.

17.



19.



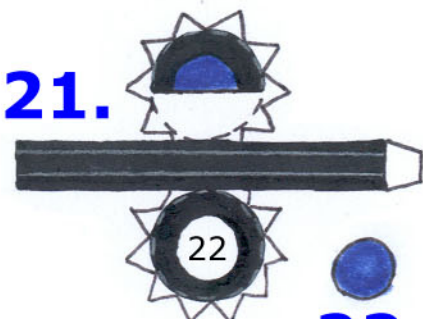
14.

15.

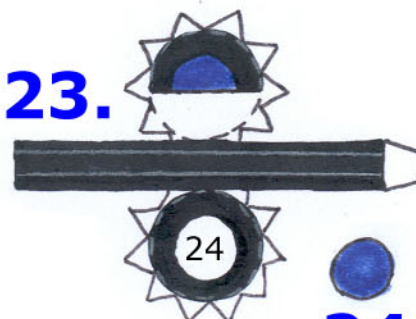


16.

21.



23.



22.

24.

* roll up as tight as possible

36.



48.



35.



47.



30.



42.



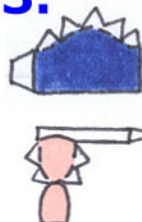
31.



33.



43.



45.



32.

25.



34.



44.

37.

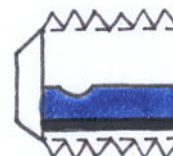


46.

38.



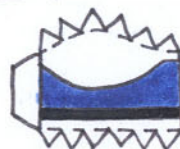
40.



26.



28.



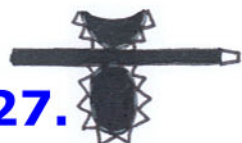
39.



41.



27.



29.

